



**Phone:** 02 8764 0017  
**Int:** (+612) 8764 0017  
**Mobile:** 0404 089 220  
**Email:** info@stellarcranes.com.au  
**Head Office:** (By Appointment Only)  
PO Box 5400  
Chullora, NSW 2190

## RETRACTABLE LANDING PLATFORMS

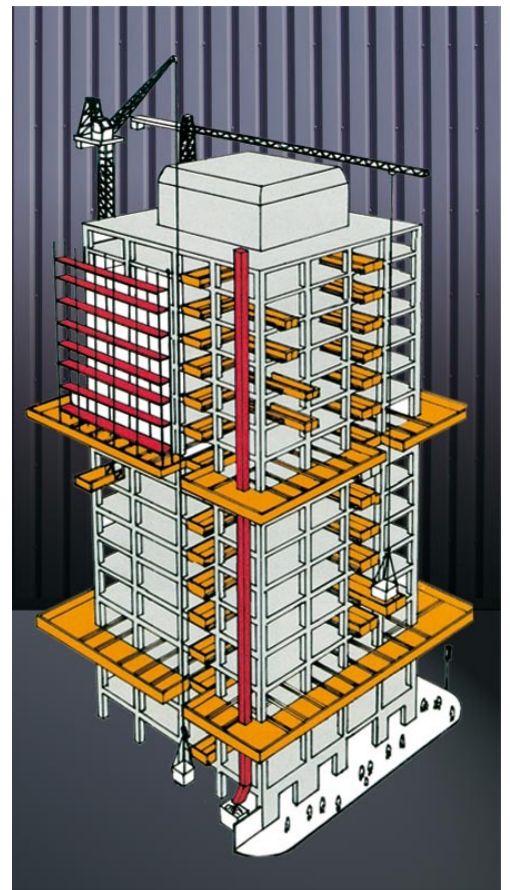
The retractable landing platform system allows for long, large and bulky material to be delivered straight to the floor where it is needed. The flexible retractable version only juts out from the building when the platform is in use. At other times, the building facade remains crane-friendly and projection-free.

- Can be dismantled and folded for transport
- Rapid and safe mounting using a crane
- 5 tonne bearing capacity (total weight 7500kg)
- Extra-flat access to building floor ensures optimal access for barrows, pallet wagons and forklifts
- Simple 'Push-Pull' system: can be pulled in or extended by one person in seconds
- Loading platform with highest level of safety and considered design

length x width total	9500 x 2900 mm
usable width	2400 mm
height, folded	400 mm
length within building	5500 mm
transport dimensions	6000 x 2900 x 400 mm
total width*	2900 mm
usable width*	2400 mm
min. prop height including platform	2000 mm
max. prop height including platform	3500 mm
width between props	2500 mm
foldable side walls	yes
platform floor	reinforced corrugated sheet
maximum loading capacity	5000 kg
net weight	2800 kg

loading capacity	P1 (rear)	P2 (rear)	P3 (front traverse)
1200 kg	2.5kN	-19.9kN	37.6kN
2000 kg	3.2kN	-25.8kN	46.7kN
2200 kg	3.4kN	-27.2kN	49.0kN
2500 kg	3.6kN	-29.4kN	52.4kN
3000 kg	4.1kN	-33.0kN	58.1kN
3500 kg	4.5kN	-36.7kN	63.8kN
5000 kg	5.8kN	-47.5kN	80.9kN

**Important note:** When using forklifts, always consider the weight of the forklift itself and do not exceed the loading capacity of 5 tonnes (including material and forklift).



**STELLAR**  
CRANES

Phone: 02 8764 0017  
 Int: (+612) 8764 0017  
 Mobile: 0404 089 220  
 Email: [info@stellarcranes.com.au](mailto:info@stellarcranes.com.au)  
 Head Office: (By Appointment Only)  
 PO Box 5400  
 Chullora, NSW 2190